





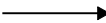


LONGCROFT WIND FARM

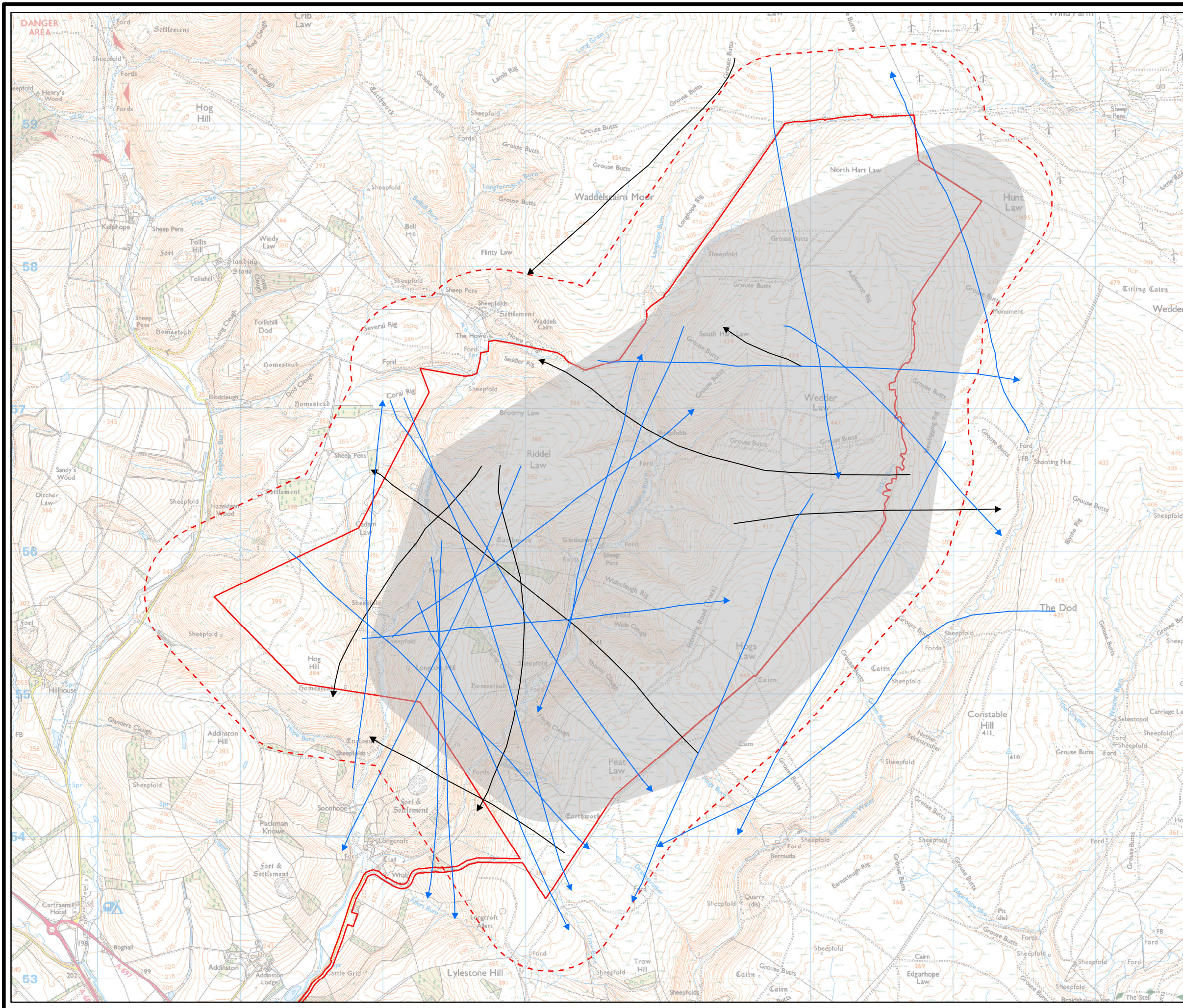
FIGURE 9.7

PINK-FOOTED GOOSE FLIGHT LINES

© CROWN COPYRIGHT, ALL RIGHTS RESERVED.
2023 LICENCE NUMBER 0100031673.

KEY:

-  Site Boundary
-  Breeding Bird Survey Area (Core)
- Flight Lines**
-  Winter 2021-22
-  Winter 2022-23
-  Collision Risk Zone



LAYOUT DWG: T-LAYOUT NO. PSCOLCF021
DRAWING NUMBER

SCALE - 1:26,000 @ A3

ENVIRONMENTAL IMPACT ASSESSMENT REPORT 2023

THIS DRAWING IS THE PROPERTY OF RENEWABLE ENERGY SYSTEMS LTD. AND NO REPRODUCTION MAY BE MADE IN WHOLE OR IN PART WITHOUT PERMISSION