



LONGCROFT WIND FARM

FIGURE 7.2.1

DESIGNATED CULTURAL HERITAGE ASSETS

© CROWN COPYRIGHT, ALL RIGHTS RESERVED.
2023 LICENCE NUMBER 0100031673.
Contains Data from ©Historic Environment Scotland.
Contains Ordnance Survey data © Crown copyright
and database right 2023.

- Site Boundary
- Proposed Turbine Layout
- Proposed Tracks
- Proposed Turning Head
- Proposed Temporary Construction Compound
- Proposed Temporary Concrete Batching Plant
- Proposed Substation Compound
- Proposed Site Entrance
- Proposed Hardstanding
- Proposed Battery Storage Compound
- Proposed Borrow Pit Search Area
- Proposed Watercourse Crossing



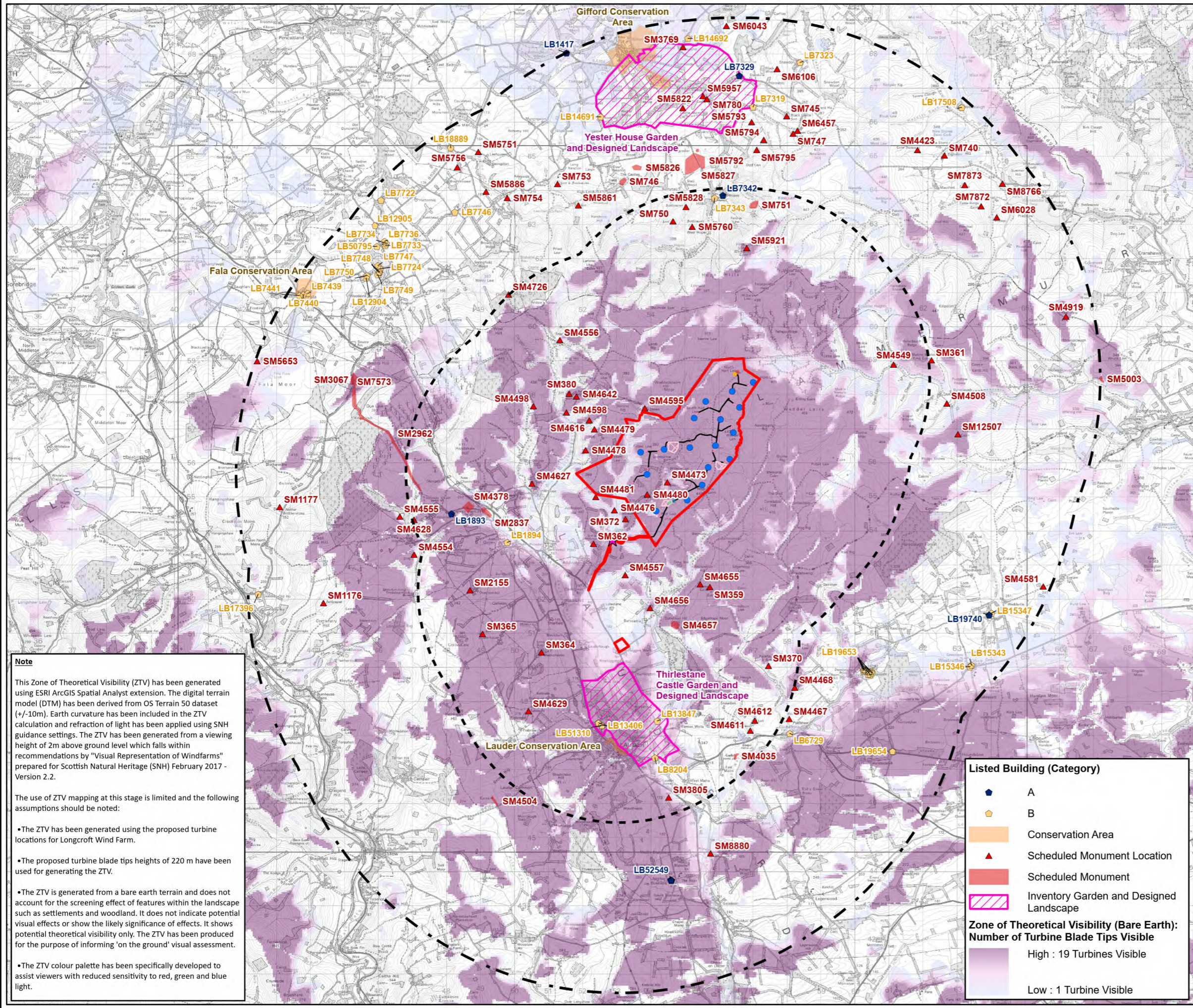
LAYOUT DWG: XXXXXDXXX-XX T-LAYOUT NO: PSC01c021

DRAWING NUMBER: **405.064862.00001.0030.0**

SCALE - 1:110,000 @ A3

ENVIRONMENTAL IMPACT ASSESSMENT REPORT 2023

THIS DRAWING IS THE PROPERTY OF RENEWABLE ENERGY SYSTEMS LTD. AND NO REPRODUCTION MAY BE MADE IN WHOLE OR IN PART WITHOUT PERMISSION



Note

This Zone of Theoretical Visibility (ZTV) has been generated using ESRI ArcGIS Spatial Analyst extension. The digital terrain model (DTM) has been derived from OS Terrain 50 dataset (+/-10m). Earth curvature has been included in the ZTV calculation and refraction of light has been applied using SNH guidance settings. The ZTV has been generated from a viewing height of 2m above ground level which falls within recommendations by "Visual Representation of Windfarms" prepared for Scottish Natural Heritage (SNH) February 2017 - Version 2.2.

The use of ZTV mapping at this stage is limited and the following assumptions should be noted:

- The ZTV has been generated using the proposed turbine locations for Longcroft Wind Farm.
- The proposed turbine blade tips heights of 220 m have been used for generating the ZTV.
- The ZTV is generated from a bare earth terrain and does not account for the screening effect of features within the landscape such as settlements and woodland. It does not indicate potential visual effects or show the likely significance of effects. It shows potential theoretical visibility only. The ZTV has been produced for the purpose of informing 'on the ground' visual assessment.
- The ZTV colour palette has been specifically developed to assist viewers with reduced sensitivity to red, green and blue light.

- Listed Building (Category)**
- A
 - B
 - Conservation Area
 - Scheduled Monument Location
 - Scheduled Monument
 - Inventory Garden and Designed Landscape
- Zone of Theoretical Visibility (Bare Earth):
Number of Turbine Blade Tips Visible**
- High : 19 Turbines Visible
 - Low : 1 Turbine Visible

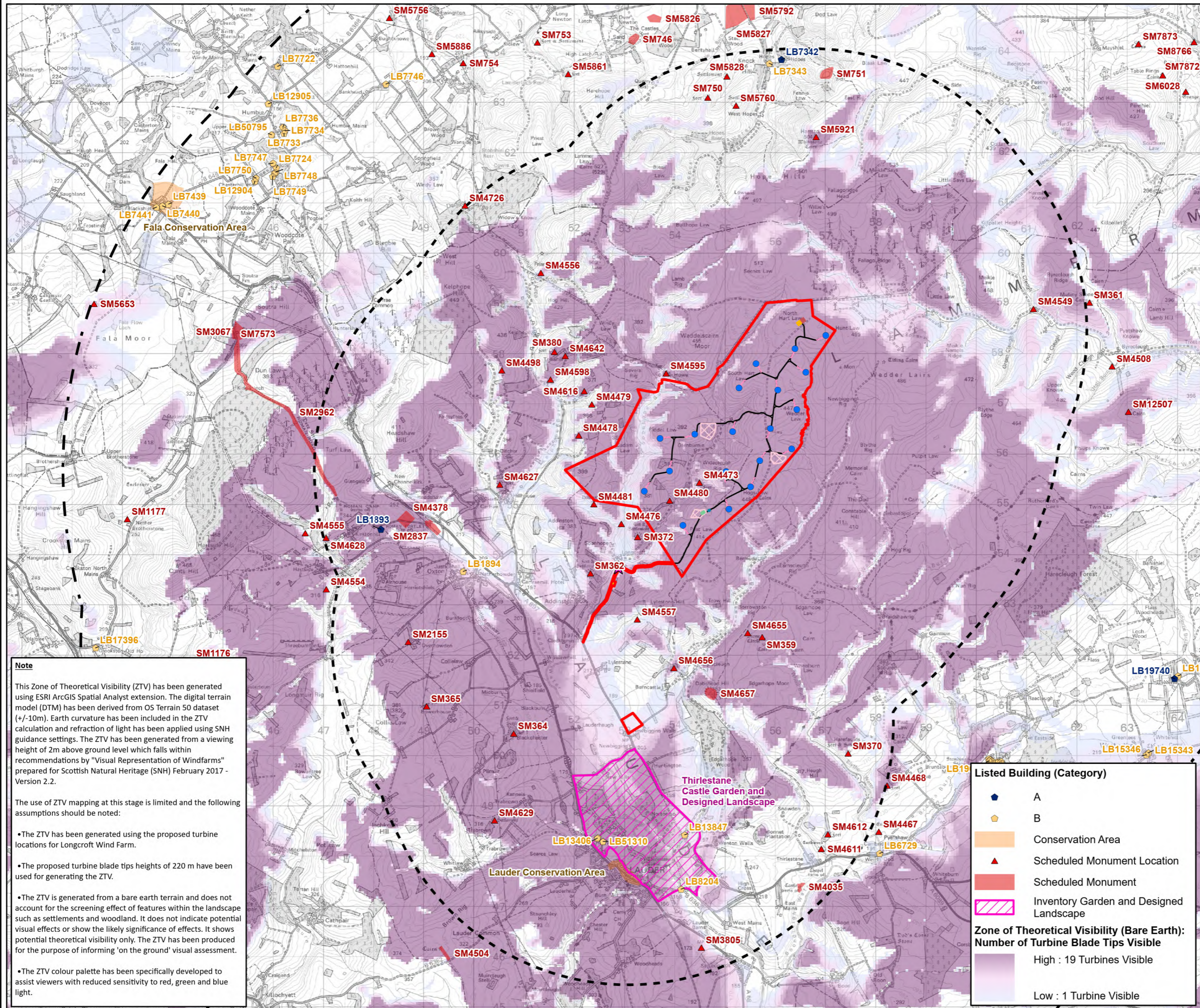


LONGCROFT WIND FARM

FIGURE 7.2.2

DESIGNATED CULTURAL HERITAGE ASSETS

© CROWN COPYRIGHT, ALL RIGHTS RESERVED.
2023 LICENCE NUMBER 0100031673.
Contains Data from ©Historic Environment Scotland.
Contains Ordnance Survey data © Crown copyright
and database right 2023.



Note

This Zone of Theoretical Visibility (ZTV) has been generated using ESRI ArcGIS Spatial Analyst extension. The digital terrain model (DTM) has been derived from OS Terrain 50 dataset (+/-10m). Earth curvature has been included in the ZTV calculation and refraction of light has been applied using SNH guidance settings. The ZTV has been generated from a viewing height of 2m above ground level which falls within recommendations by "Visual Representation of Windfarms" prepared for Scottish Natural Heritage (SNH) February 2017 - Version 2.2.

The use of ZTV mapping at this stage is limited and the following assumptions should be noted:

- The ZTV has been generated using the proposed turbine locations for Longcroft Wind Farm.
- The proposed turbine blade tips heights of 220 m have been used for generating the ZTV.
- The ZTV is generated from a bare earth terrain and does not account for the screening effect of features within the landscape such as settlements and woodland. It does not indicate potential visual effects or show the likely significance of effects. It shows potential theoretical visibility only. The ZTV has been produced for the purpose of informing 'on the ground' visual assessment.
- The ZTV colour palette has been specifically developed to assist viewers with reduced sensitivity to red, green and blue light.

- Site Boundary
- Proposed Turbine Layout
- Proposed Tracks
- Proposed Turning Head
- Proposed Temporary Construction Compound
- Proposed Temporary Concrete Batching Plant
- Proposed Substation Compound
- Proposed Site Entrance
- Proposed Hardstanding
- Proposed Battery Storage Compound
- Proposed Borrow Pit Search Area
- Proposed Watercourse Crossing

- Listed Building (Category)**
- A
 - B
 - Conservation Area
 - Scheduled Monument Location
 - Scheduled Monument
 - Inventory Garden and Designed Landscape
- Zone of Theoretical Visibility (Bare Earth):
Number of Turbine Blade Tips Visible**
- High : 19 Turbines Visible
 - Low : 1 Turbine Visible



LAYOUT DWG: XXXXXDXXX-XX T-LAYOUT NO: PSC01c021

DRAWING NUMBER: 405.064862.00001.0030.0

SCALE - 1:75,000 @ A3

ENVIRONMENTAL IMPACT ASSESSMENT REPORT 2023

THIS DRAWING IS THE PROPERTY OF RENEWABLE ENERGY SYSTEMS LTD. AND NO REPRODUCTION MAY BE MADE IN WHOLE OR IN PART WITHOUT PERMISSION