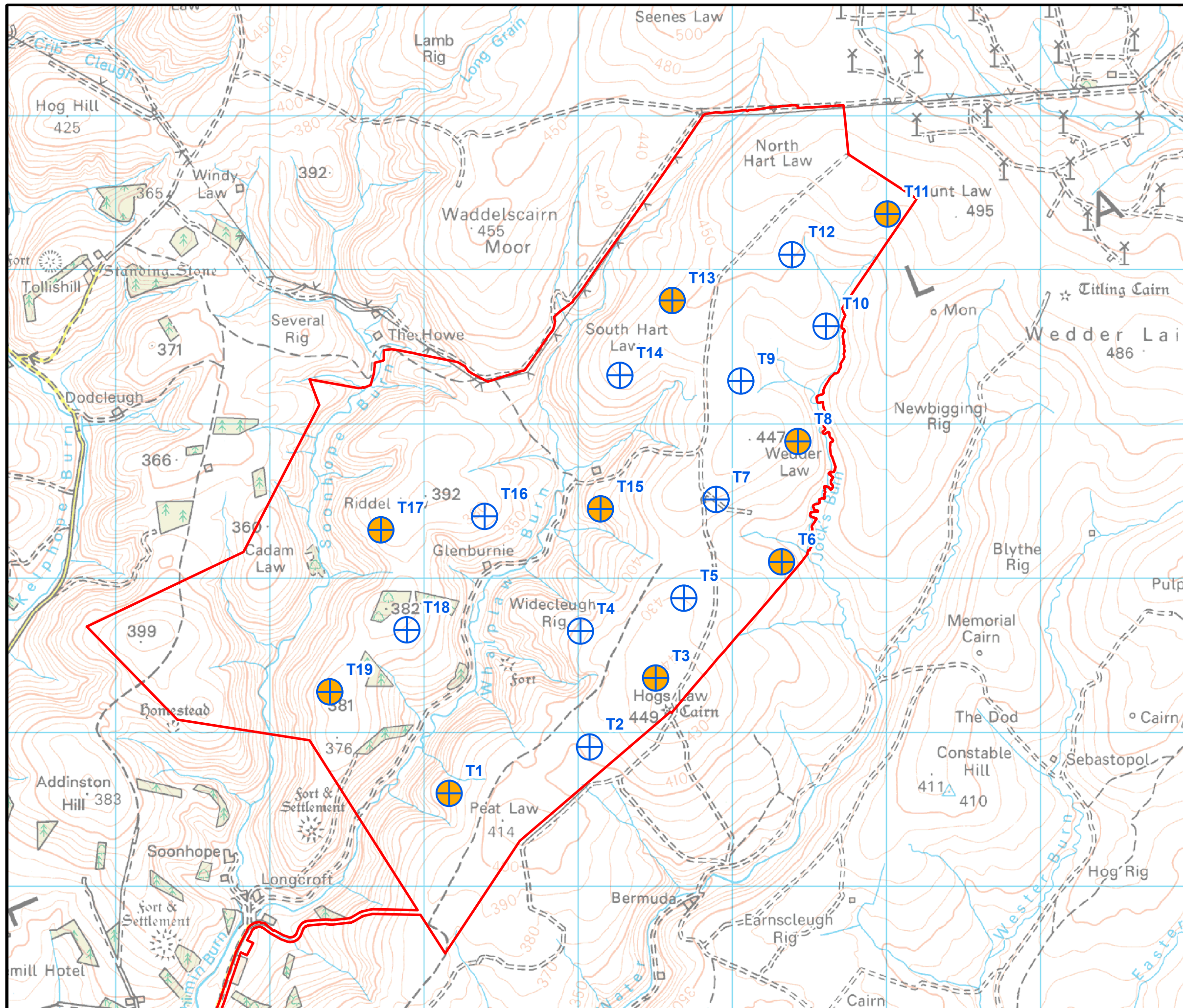




# LONGCROFT WIND FARM

## FIGURE 14.1

### AVIATION LIGHTING SCHEME



Reproduced from Ordnance Survey digital data © Crown copyright and database rights 2023. All rights reserved. License number 0100031673.

- TURBINES
- SITE BOUNDARY
- LIT TURBINES

In accordance with Article 222 of the Air Navigation Order, obstacles of 150 m or more must have visible lights. RES has agreed a reduced lighting scheme for Longcroft with the Civil Aviation Authority as follows:

- T01 Cardinal Point
- T11 Cardinal Point/Highest Altitude
- T17 Cardinal Point
- T19 Cardinal Point
- T03 Perimeter Point/4th Highest Altitude
- T06 Perimeter Point
- T13 Perimeter Point/2nd Highest Altitude
- T08 Perimeter Point/7th Highest Altitude
- T15 Central Point



LAYOUT DWG: N/A      T-LAYOUT NO.: PSCOLCF021

DRAWING NUMBER: **04728-RES-LAY-DR-TE-008**

SCALE - 1:24,000 @ A3

**ENVIRONMENTAL IMPACT ASSESSMENT REPORT 2023**

THIS DRAWING IS THE PROPERTY OF RENEWABLE ENERGY SYSTEMS LTD. AND NO REPRODUCTION MAY BE MADE IN WHOLE OR IN PART WITHOUT PERMISSION