



# LONGCROFT WIND FARM EIA REPORT

## FIGURE 10.2

### HYDROLOGICAL FEATURES

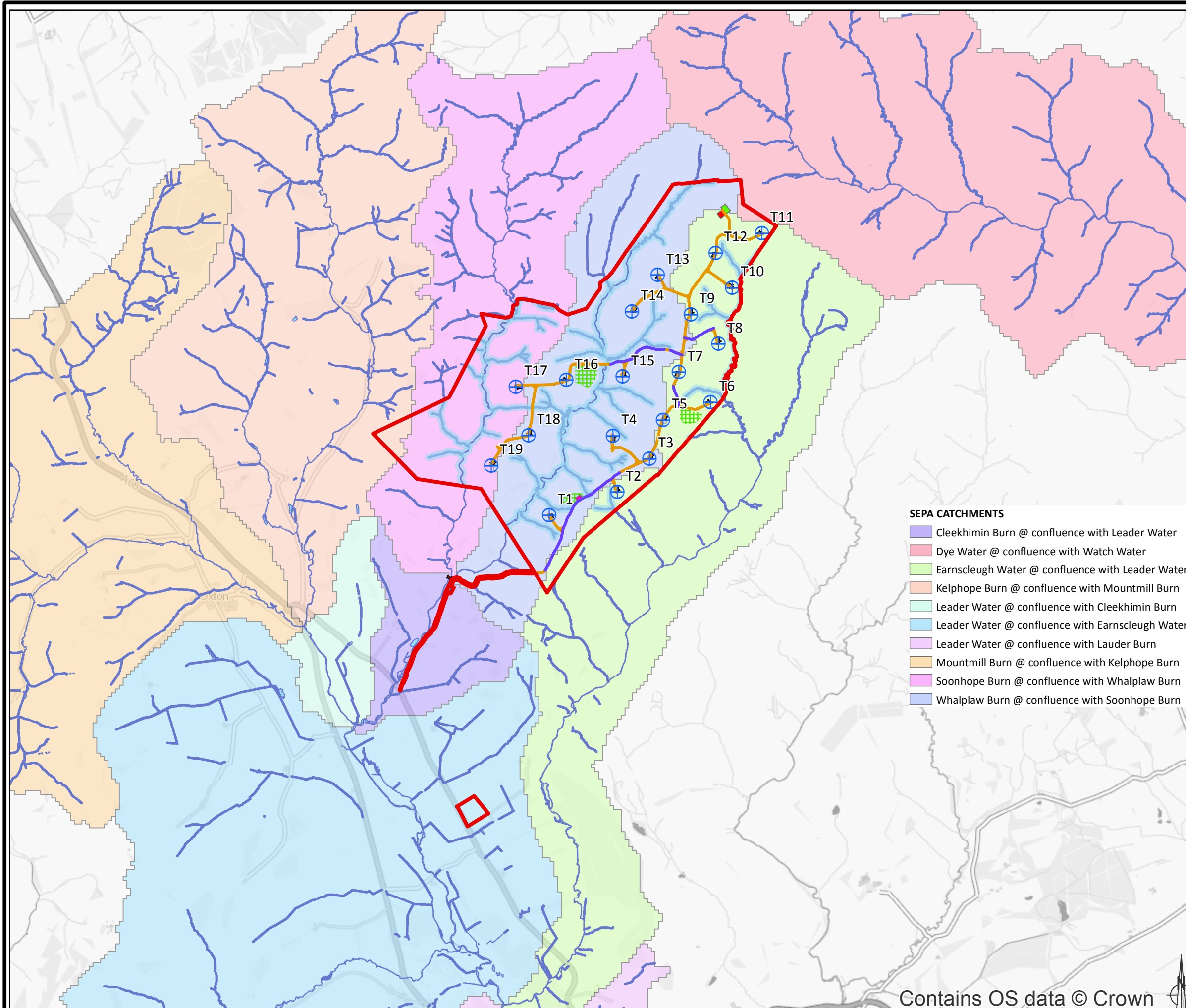
© CROWN COPYRIGHT, ALL RIGHTS RESERVED.  
2023 LICENCE NUMBER 0100031673.

#### KEY

- Site Boundary
- + Turbines
- Upgraded Tracks
- Proposed Tracks
- Existing Public Road
- Watercourse Crossing
- Temp Construction Compound
- Temp Concrete Batching Plant
- Substation Compound
- Site Entrance
- Hardstandings
- Borrow Pit Search Areas
- Battery Storage Compound
- Watercourses
- Waterbodies
- Watercourse Buffer (50 m)

#### SEPA CATCHMENTS

- Cleekhimin Burn @ confluence with Leader Water
- Dye Water @ confluence with Watch Water
- Earnsclough Water @ confluence with Leader Water
- Kelhope Burn @ confluence with Mountmill Burn
- Leader Water @ confluence with Cleekhimin Burn
- Leader Water @ confluence with Earnsclough Water
- Leader Water @ confluence with Lauder Burn
- Mountmill Burn @ confluence with Kelhope Burn
- Soonhope Burn @ confluence with Whalplaw Burn
- Whalplaw Burn @ confluence with Soonhope Burn



Contains OS data © Crown

LAYOUT DWG: XXXXXDXXX-XX T-LAYOUT NO: PCCaccXXX

DRAWING NUMBER: XXXXXDXXX-XX

SCALE - 1:50,000 @ A3

ENVIRONMENTAL IMPACT  
ASSESSMENT REPORT 2023

THIS DRAWING IS THE PROPERTY OF RENEWABLE ENERGY  
SYSTEMS LTD. AND NO REPRODUCTION MAY BE MADE IN  
WHOLE OR IN PART WITHOUT PERMISSION